

Documentation Guide

MigrationPro: WooCommerce To
PrestaShop Migration Tool



Superhero
Seller



Modules
Partner Creator



PrestaShop's
Favorite



+5000
downloads

Getting started

Phase 1.	Overview	3
Phase 2.	Preparation for migration	4
	Attentions	4
	Setup Target shop	4
	Download and Install Migration module	4
Phase 3.	Start migration process	5
	Source and Target shop connection	5
	Configuration	6
	Migration process	9
	Reporting	10
Phase 4.	Support	11

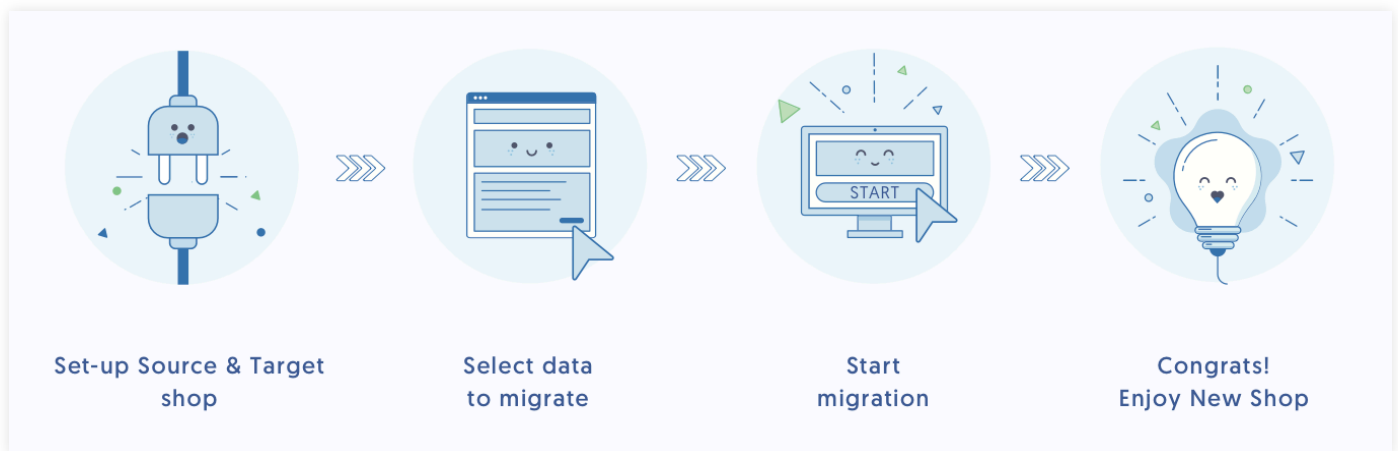


Overview

1

MigrationPro: WooCommerce to PrestaShop Migration module helps you migrate important data, including products, categories, customers, orders, and other related entities safely, quickly and efficiently just in few steps. Additionally, for saving time and minimize efforts for merchants, we are offer you our All-in-one migrations service for additional cost. We'll perform proffessional data migration and provide all the necessary migration & customization for you. As an important part of the module implementation process, we are proud of our tech support and customer service, where you'll get professional care.

How it works





ATTENTION

Apply these options before migration

For Source WooCommerce shop:

- Ensure you have the right permission to upload files into your source WooCommerce shop. It must not block access from Target shop to the connector file.
- Source shop can operate normally during migration as it requires a very limited resource for the process.

For Target PrestaShop shop:

- Target PrestaShop shop should be placed in a stable hosting or in localhost.
- PHP Curl must be enabled.
- PHP Fopen (allow_url_fopen) must be On.
- It also must not block connection to source WooCommerce shop.
- Web server (mostly apache) should have full permission to write on /img folder.
- Demo mode on backend should be turned off
- base64_decode should be allowed.
- It is strongly recommended to backup Source and Target shop.

Setup Target shop (new shop)

For migrating data from Source shop you need to create a Target shop (new shop), where migrated data will be placed and saved.

Download and Install Migration module

1. After downloading the module file from PrestaShop Addons Marketplace, install the module to the PrestaShop.
2. Login Target shop backend, go to Modules Manager (if old version: "Modules and Services") and find "MigrationPro: WooCommerce To PrestaShop migration Module".
3. Click configure button on module.



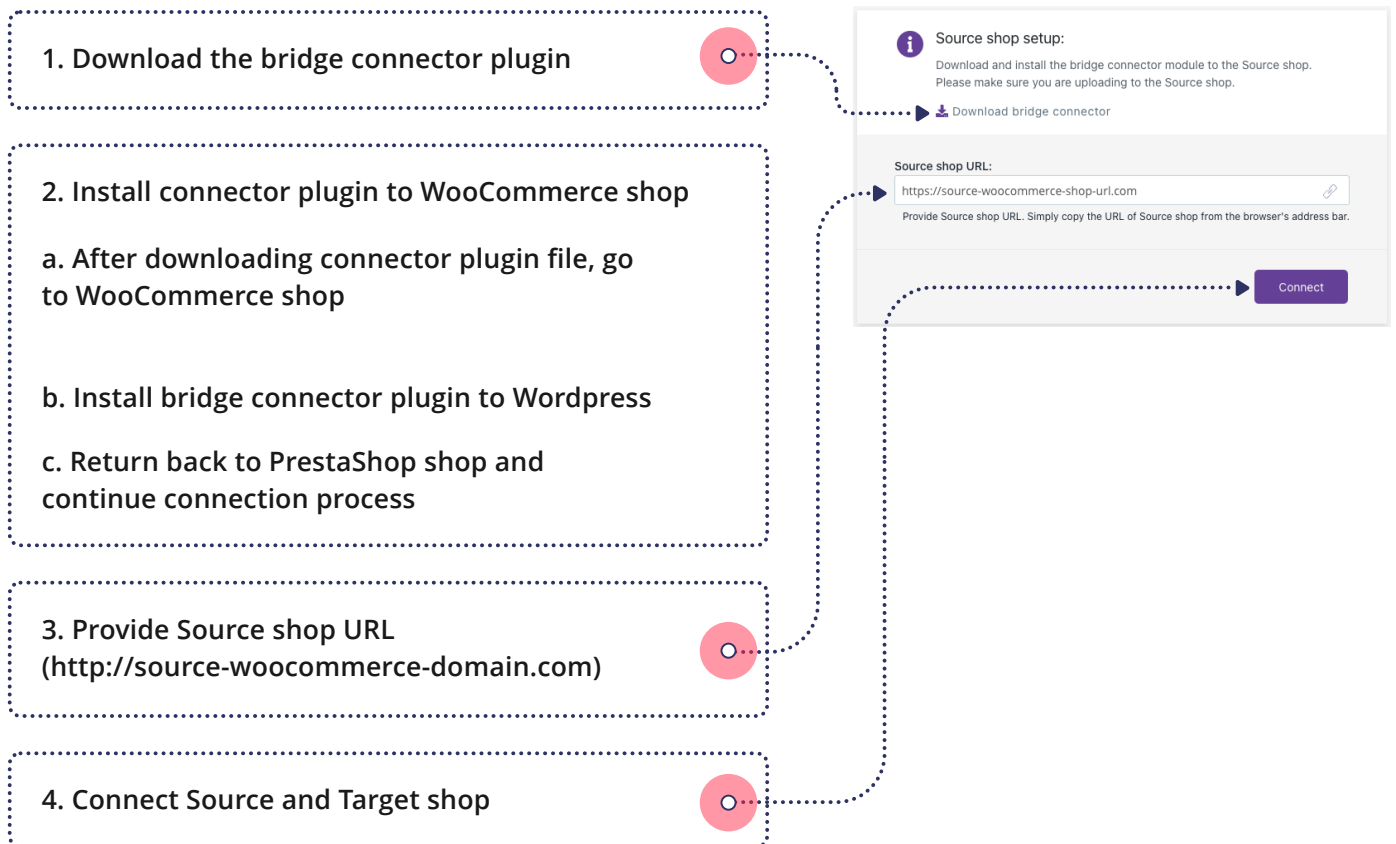
Start migration process

3

Source and Target shop connection

To migrate Source data you need to establish a secure connection between Target and Source shop.

Download connector zip WordPress plugin from module connectionpage and install the connector plugin to WordPress shop. Please make sure you are installing bridge connector module to the Source shop.



Configuration

Select entities and map Source shop data to start automated migration process.

Entity to migrate

Select entites to migrate to Target shop.

Additional options

Select options according to configuration.

Store mapping

Map shop data according to shop quantity and migration plan. If you want to migrate Source shop as multistore, set the Target shop as multistore, because it must be set a proper connection between entities in database.

Note: [Multistore creating & enabling explanation at page 9.](#)

Currency mapping

Assign Source shop currencies to proper Target shop currencies. Creating currencies in Target shop may be needed.

Language mapping

If Source shop is multilingual, corresponding languages should be available in Target shop. You may need to create additional languages in Target shop to avoid data loss.

Entities to Migrate

☐ Select All

☐ Taxes

☐ Manufacturers

☒ Categories

☒ Products

☒ Orders

☒ Customers

Additional Options:

☒ Keep ID

This option keeps IDs of Source shop entity data while migrating to Target shop (new shop). In a situation where this option is not chosen, the entity IDs in Target shop will differ from the ones in Source shop.

☐ Recent Data Migration

You have new entities on your Source shop (old shop) and you want to make the migration to Target shop (new shop) by keeping entities migration process in order and not duplicating data. By choosing this option, your recent data (products, customers, orders) will be migrated from your Source shop to Target shop.

☒ Clear Current Data

This option allows you to delete the current data (products, categories, etc.) in the Target shop (new shop) automatically before migrating data from Source shop.

Mapping Store

Demo

PrestaShop to PrestaShop Migration tool

Mapping Currencies

USD

US Dollar

Mapping Languages

en_US

English (English)

Customer group mapping

Assign Source shop customer group to proper Target shop customer group. Creating additional customer group in Target shop may be needed.

Order status mapping

Assign Source shop order statuses to proper Target shop order statuses. Creating additional order statuses in Target shop may be needed.

Migration speed

Adjust speed according to your server performance.

Start migration

Click start migration after advanced settings configuration and confirm your action in pop-up page.

Mapping customer groups

Visitante

Visitor

Invitado

Guest

Cliente

Customer

Mapping order statuses

Payment accepted

Payment accepted

Processing in progress

Processing in progress

Shipped

Shipped

Delivered

Delivered

Canceled

Canceled

Refunded

Refunded

Delivery in progress

Delivery in progress

Handling of shipment in progress

Handling of shipment in progress

Stripe Partial Refund

Stripe Partial Refund

Migration Speed

Item Count per Request

5 10 20 30 40 50 60 70 80 90 100
Low Medium High

Select slow migration count, if your shop(s) is hosted on shared hosting or your server returns this error page: 'Internal Server Error'.

Back

Start Migration

Advanced settings

Confirmation pop-up page will appear after clicking start migration. Read and check selected entities and additional options.

Confirmation

Selected Entities to Migrate

☒ Taxes

☒ Products

☒ Manufacturers

☒ Customers

☒ Categories

☒ Orders

Selected Additional Options

☒ Clear Current Data

This option allows you to delete the current data (products, categories, etc.) in the Target shop (new shop) automatically before migrating data from Source shop.

☒ Keep ID

This option keeps IDs of Source shop entity data while migrating to Target shop (new shop). In a situation where this option is not chosen, the entity IDs in Target shop will differ from the ones in Source shop.

Start Migration

Note:

Multistore settings guide in Target shop

1. Go to general

2. Enable multistores

3. Go to multistore

4. Add a new shop

PrestaShop

Preferences

General

Use HTML Purifier Library

Round mode

Round type

Number of decimals

Display brands and suppliers

Display best sellers

Enable Multistore

Main Shop Activity

PrestaShop

Multistore

Multistore Tree

Multistore

Multistore Options

Migration process

Data is being migrated automatically according to selected entities and mapped Source shop data.

In order to progress, you should not remove connector plugin from WooCommerce source shop.

Migration process controller

You can play, pause or stop migration process at any time.

Migration period

Migration time being calculated approximately according to speed of entities' amount migration and server performance.

Progress bar

The progress bar shows percentage of migrated data for each entity.

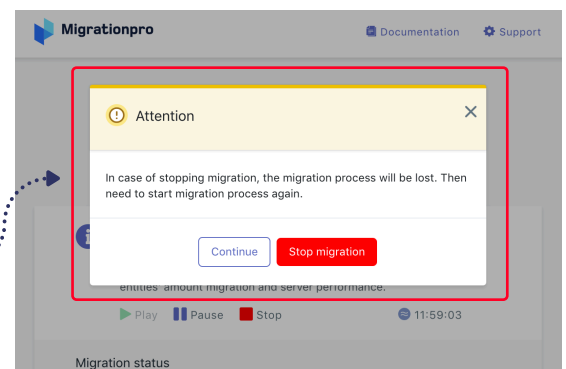
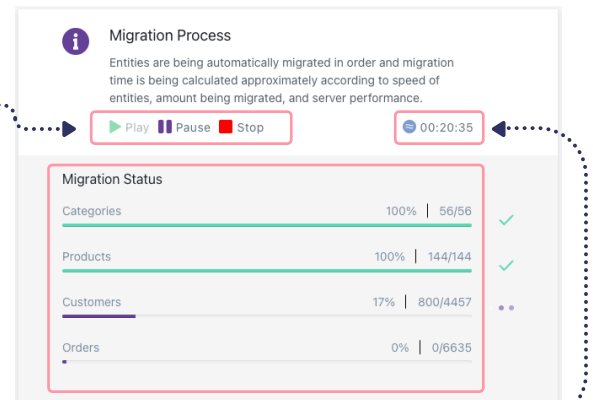
Migration status

You can be aware about process status according status signs.

- ✓ Done status
- ⏸ Process paused status
- ✗ Error status

Stopping of migration

By stopping migration, the migration process will be lost and you need to start new migration from scratch.

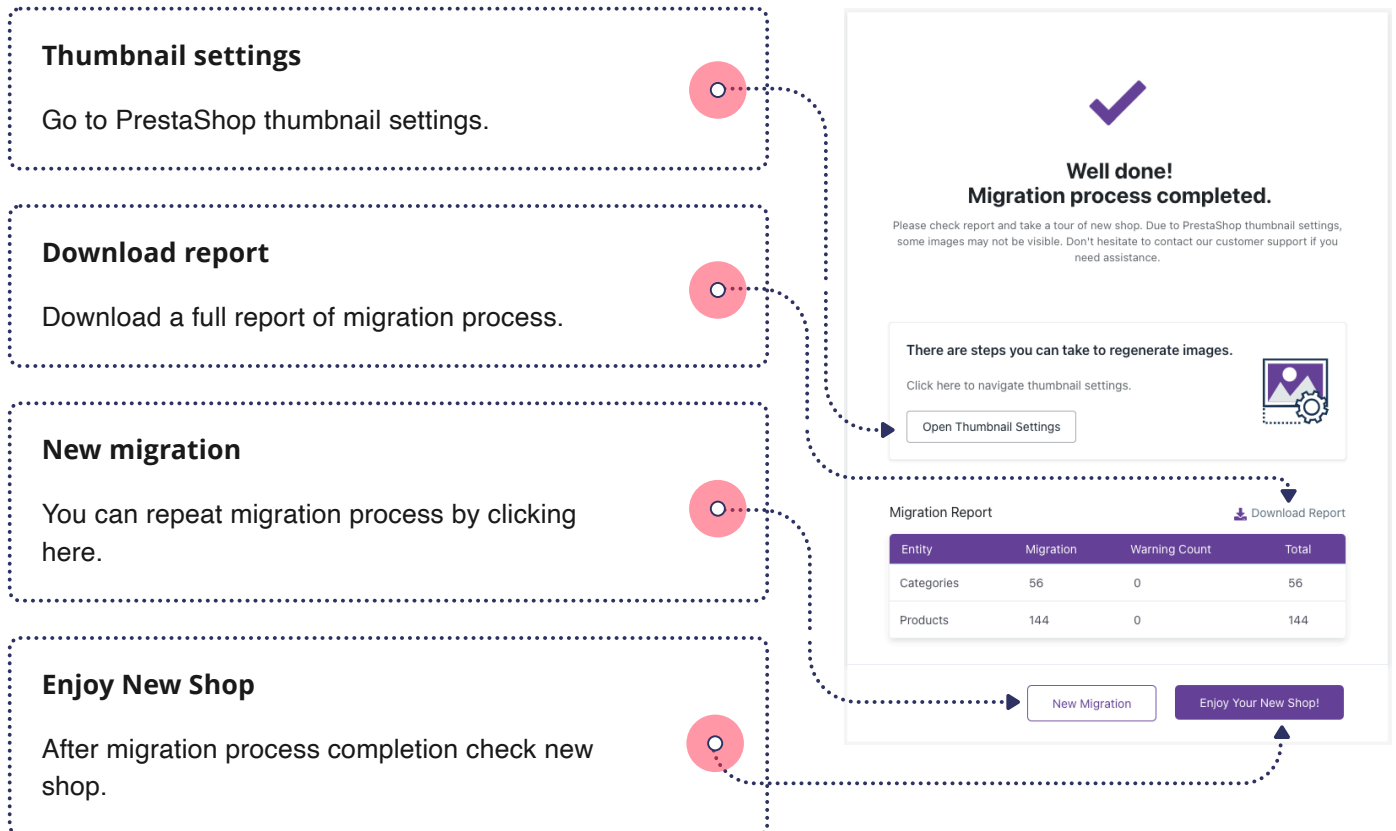


Reporting

After process completion, go through the report and check your new shop.

Due to PrestaShop thumbnail settings, some images may not be visible. According to PrestaShop validation guideline, our module can't execute to thumbnail settings.

After migration completion, we recommend to clear cache and re-build indexes. For doing that please apply these steps : "Advanced Parameters => Performance => Clear Cache" and "Preferences => Search => Re-build the entire index"



Customer Password Migration settings:

MigrationPro: WooCommerce To PrestaShop provides a possibility to migrate customer passwords while transferring data from WooCommerce to PrestaShop. For keep old password need everytime keep enabled the module.



Support

4



Technical support



Professional care



Customer service



Hotfixing & Troubleshooting

Please drop us a message at: [PrestaShop Addons](#)

We are striving to get your questions answered within 24 hours.

Wish to migrate shop by experts, lean back and trust us!

Migrating from your current WooCommerce to PrestaShop is a challenging process. The best and most simple way to make this migration will be hiring highly qualified specialists. You can be sure that your PrestaShop shop will be in good hands and migration will be handled without errors and data loss.

Specialized Services

- Custom module development
- Professional support service and individual assistance
- Secure, safe and easy migrations from other e-commerce platforms.
- PrestaShop version upgrade to the versions 1.6.x and 1.7.x from PrestaShop stores 1.2, 1.3, 1.4, 1.5, 1.6 and 1.7
- All-in-one Migration and upgrading your shop to Prestashop
- Hotfixing & Troubleshooting
- Installations, setup & maintenance for PrestaShop
- Moving upgraded shop to main domain (if customer installed new shop to the subdomain or another domain)
- Theme Development & Customization
- 3rd Party Integrations

Addons page: https://addons.prestashop.com/en/202_migrationpro

Module Partner page: <https://www.prestashop.com/en/experts/module-creators/migrationpro>

